

# MONTHLY MEMBERSHIP PROGRESS REPORT

LOCATION INDIA

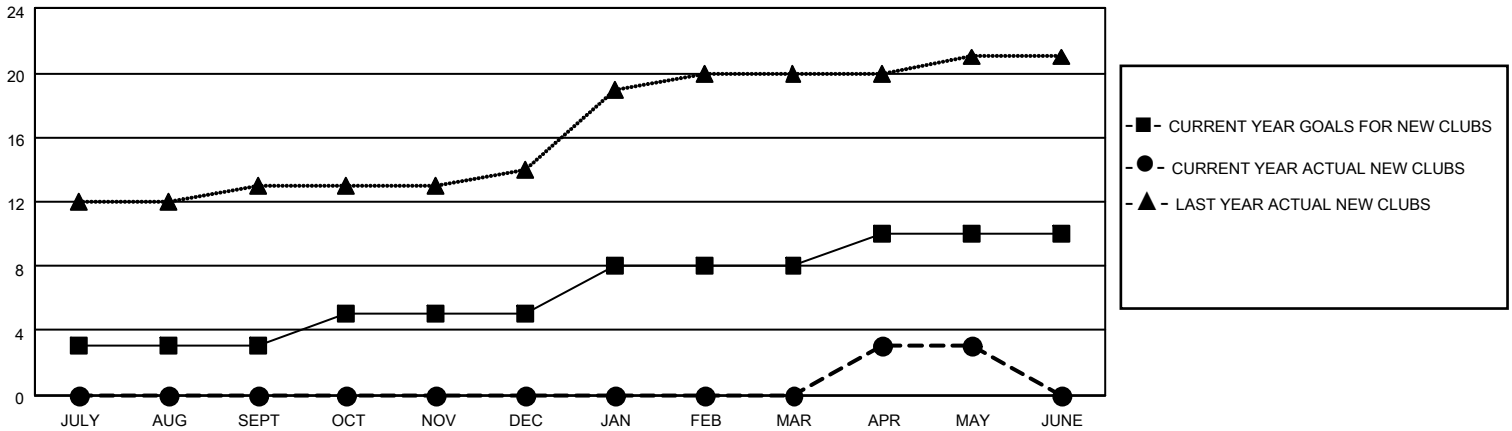
District 3232B1

Results as of: 5/31/2023

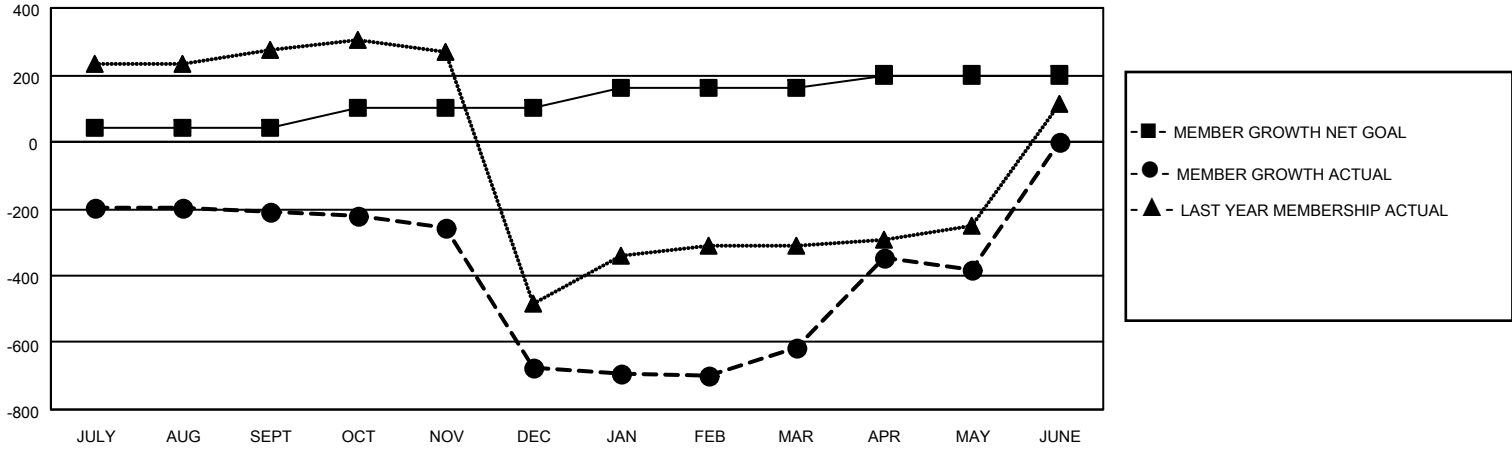
Clubs			
RESULTS FOR 2022-2023			
QUARTER	NEW CLUB GOAL	NEW CLUBS	DROPPED CLUBS
JULY/AUG/SEPT	3	0	45
OCT/NOV/DEC	2	0	4
JAN/FEB/MAR	3	0	5
APR/MAY/JUNE	2	3	0

Members			
RESULTS FOR 2022-2023			
QUARTER	MEMBER GROWTH NET GOAL	MEMBER GROWTH ACTUAL	DROPPED MEMBERS ACTUAL (including transfers)
JULY/AUG/SEPT	40	88	275
OCT/NOV/DEC	60	264	683
JAN/FEB/MAR	60	104	30
APR/MAY/JUNE	40	367	65

**GOALS AND ACTUAL NEW CLUBS CUMULATIVE**



**GOALS AND ACTUAL MEMBERS CUMULATIVE**



<b>DROPPED CLUBS: 54</b>	
<b>DROPPED MEMBERS</b>	
DECEASED	6
CLUB CANCELLED	76
OTHER	971
<b>TOTAL</b>	<b>1,053</b>

61 CLUBS OF 139 ADDED 1 OR MORE NEW MEMBERS

[CLICK HERE FOR CUMULATIVE MEMBERSHIP DATA](#)

<u>GENDER DISTRIBUTION</u>	
MALE	2,469 (67.33%)
FEMALE	1,198 (32.67%)
NON BINARY	0 (0.00%)
PREFER NOT TO ANSWER	0 (0.00%)
<b>TOTAL FAMILY UNIT MEMBERS</b>	<b>2,939</b>
<b>FAMILY MEMBERS PAYING HALF DUES</b>	<b>2,197</b>